



Orsett Hall

HOTEL, RESTAURANT & SPA

Very Simply, The Best



CORPORATE
BROCHURE

ORSETT HALL

A one-of-a-kind experience awaits you at Orsett Hall. Our 4-star hotel is perched on 12 acres of landscaped gardens in the Essex countryside, just 40 minutes outside of Central London.

Featuring:

7 Meeting & Event Rooms

Wedding Chapel
& Outside Gazebo

56 Bedrooms

Garden Brasserie

Café Sartoria & Bar

Orsett Hall Spa & Gym

Hairdressers

Florist

Car Showroom



Orsett Hall's highly motivated and professional team are on hand to assist you in the organisation of your event, and to apply their extensive knowledge and expertise to help ensure that every detail exceeds your expectations.

Our function suites enable us to cater for meetings and events of a varying scale, from interviews and small meetings with less than ten people to product launches and marketing events for up to 450 people. Our expansive landscaped gardens provide a scenic backdrop for any outdoor activities, and are particularly popular with businesses hosting team building events.

DINING

Our Garden Brasserie welcomes you with a beautiful floral-inspired décor and dazzling views of the hotel grounds. Offering Breakfast, Lunch, Afternoon Tea and Dinner.

Café Sartoria is the perfect spot for breakfast, coffee and cake with friends, a lunchtime bite or an evening meal or snack. Located in the Sartoria Building, this café offers striking design, including unusual wallpaper that is a talking point for all who visit.



WHITMORE SUITE

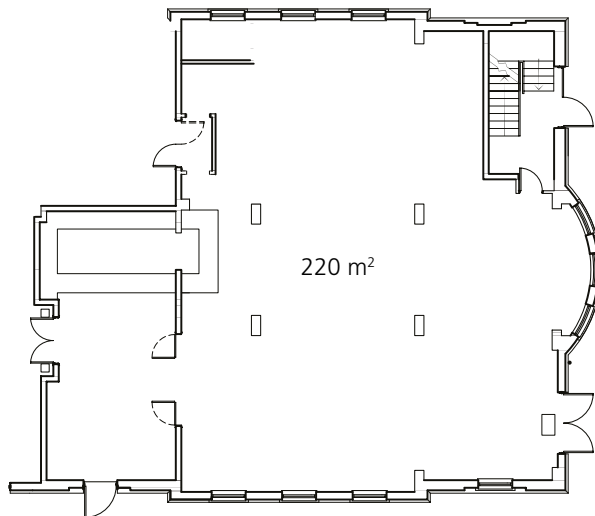
A contemporary style room in silver and greys with crystal chandeliers. This 220 square metre ground floor room is suitable for meetings and small exhibitions of up to 150 delegates. The Whitmore Suite incorporates full public address, sound and lighting system.

Room Summary: 220m2
Up to 150 delegates
Licensed bar
Private patio available
Free wi-fi
Natural light
Air conditioned
Fully accessible

Seating Guide: Theatre 130
Cabaret 80
Classroom 60
Boardroom 40
U-Shape 36
Lunch/Dinner 150
Dinner Dance 140



Room Layout:



GOLD ROOM

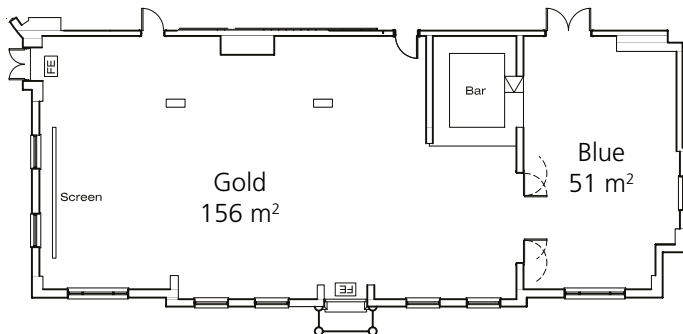
A Georgian style room complete with a period fireplace, crystal chandeliers and rich carpets. The Gold Room is 156 square metres in size and can accommodate up to 100 delegates. Situated on the ground floor, it offers ample natural light and double aspect views over the gardens. The room incorporates a full public address, sound, music and lighting system.

Room Summary: 156m²
Up to 100 delegates
Licensed bar
Private patio available
Free wi-fi
Natural light
Air conditioned
Fully accessible

Seating Guide: Theatre 100
Cabaret 60
Classroom 48
Boardroom 40
U-Shape 32
Lunch/Dinner 100
Dinner Dance 90



Room Layout:



BLUE ROOM

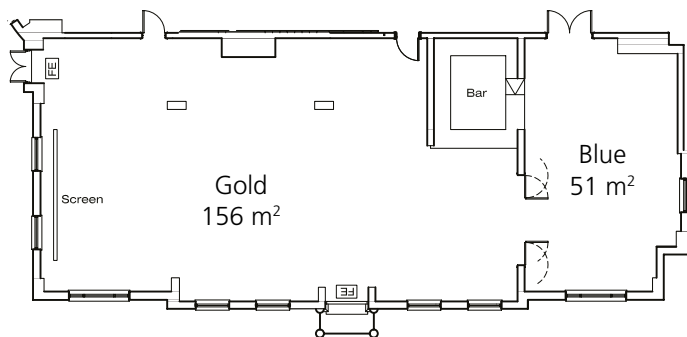
The 51 square metre Blue Room is suitable for smaller meetings and private dinners of up to 36 people. The room benefits from ample natural light and views looking over the gardens.

Room Summary: 51m²
Up to 30 delegates
Licensed bar
Free wi-fi
Natural light
Air conditioned
Fully accessible

Seating Guide: Theatre 40
Cabaret 18
Classroom 18
Boardroom 24
U-Shape 24
Lunch/Dinner 36



Room Layout:



JAGUAR BAR

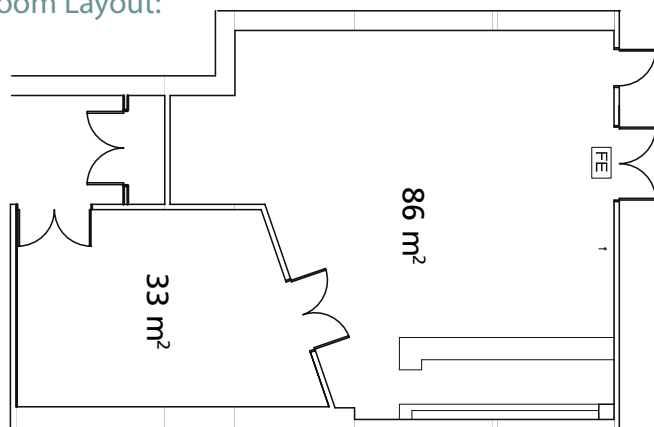
The Jaguar Bar enjoys a quiet location on the lower ground floor of the Pavilion. This 86 square metre room can accommodate up to 100 delegates. The venue includes a mirrored ceiling and an adjoining seating area which is suitable for breaks and buffet lunches.

Room Summary: 86m2
Up to 100 delegates
Licensed bar
Free wi-fi
Air conditioned
Fully accessible
(via lift)

Seating Guide: Theatre 50
Cabaret 24
Classroom 27
Boardroom 30
U-Shape 26
Lunch/Dinner 40
Dinner Dance 30
Evening Function 100



Room Layout:

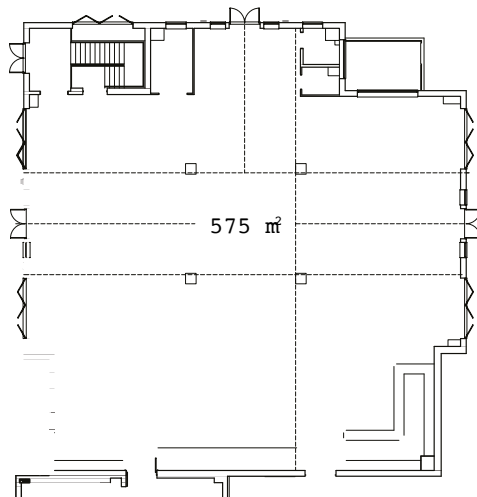


PAVILION

One of the largest venues in the area, this stunning purpose built conference suite is 575 square metres and can accommodate large exhibitions and trade shows of up to 450 delegates. The Pavilion benefits from floor to ceiling French windows which open onto private patios, feature gardens and covered heated seating area. The suite incorporates full public address, lighting, sound and music system. A ground floor room situated in a quiet location with private access and loading areas, the Pavilion is readily accessible.

Room Summary: 575m2
Up to 450 delegates
Licensed bar
Private patio available
Free wi-fi
Natural light
Air conditioned
Fully accessible

Seating Guide: Theatre 450
Cabaret 280
Lunch/Dinner 400
Dinner/Dance 350



Room Layout:

BOARDROOM

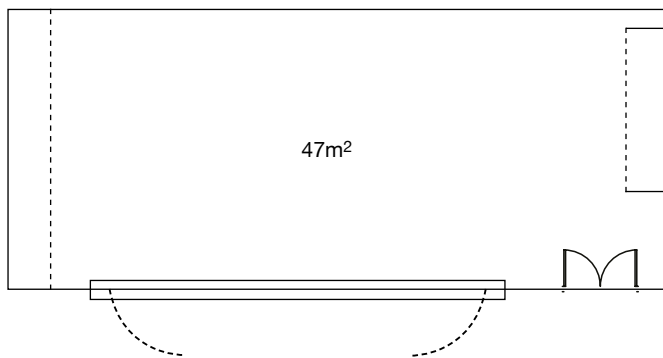
The Boardroom is situated on the lower ground floor and enjoys a quiet location. It is 45 square metres in size and can accommodate up to 20 delegates, making it perfect for off-site meetings and seminars. There is space in the room for tea, coffees and buffet lunches to be served without any disruptions to your event.

Room Summary: 45m²
Up to 20 delegates
Free wi-fi
Air conditioned
Fully accessible
(via lift)

Seating Guide: Boardroom 20



Room Layout:



KEANE ROOM

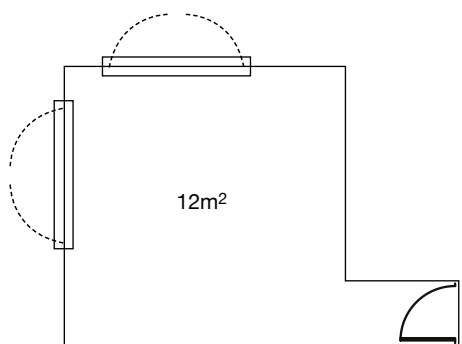
The Keane Room is located on the first floor of the hotel and enjoys a quiet location away from the hustle and bustle of the main reception area. This modern room is 15.5 square metres in size and can accommodate 8 delegates perfect for off-site interviews and meetings.

Room Summary: 15.5m²
Up to 8 delegates
Free wi-fi
Natural light
Air conditioned
Fully accessible
(via lift)

Seating Guide: Boardroom 8



Room Layout:



BEDROOMS AND SUITES

Orsett Hall offers 56 bedrooms including a choice of Superior, Executive and Suites.

All bedrooms are equipped with all the essentials, such as wireless internet access, complimentary tea & coffee making facilities, air-conditioning, flat screen TV, in-room safe and hairdryer.

Please see insert enclosed for our 24 hour delegate rates.

For further information on our bedrooms please contact our Reservations Team on 01375 891402 or email: reservations@orsetthall.co.uk.



TESTIMONIALS

"Our team recently held our annual Away Day at Orsett Hall. The staff were extremely helpful both during and prior to our arrival and ensured that all aspects of our event ran smoothly.

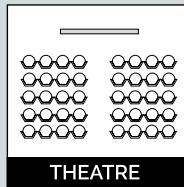
The facilities were perfect for our team meeting, with free Wi-Fi access, modern audio visual facilities and full-service catering. Orsett Hall also provided extremely varied menu options for the team. Overall the whole event was extremely well organised and the setting was perfect; we plan to return next year."

Guy Carpenter

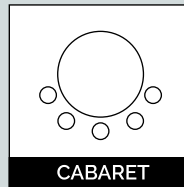
"Due to its reliability and flexibility, Orsett Hall continues to be our first port of call when accommodation or conferencing facilities are required in Essex. The food is consistently outstanding and the staff are approachable and friendly."

EDL - a world of new energy

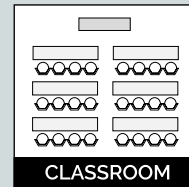
Table Layout options:



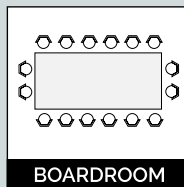
THEATRE



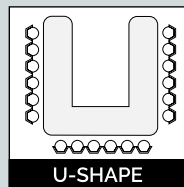
CABARET



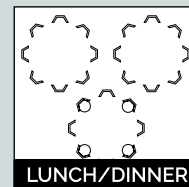
CLASSROOM



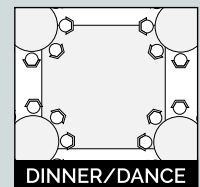
BOARDROOM



U-SHAPE



LUNCH/DINNER



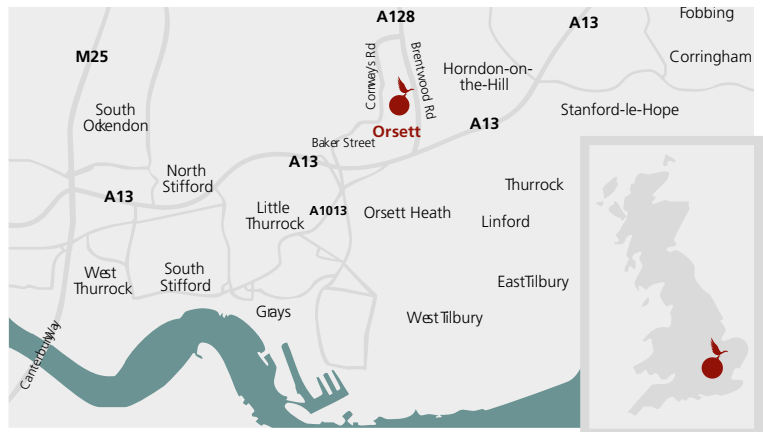
DINNER/DANCE



HOW TO FIND US

At junction 29 - Exit toward Southend/Basildon/A127. At the roundabout, take the 1st exit onto the A127 ramp to Southend/Basildon. Merge onto Southend Arterial Rd/A127. Continue to follow A127. Take the exit. At the roundabout, take the 3rd exit onto Tilbury Rd/A128, continue to follow A128. Turn right at Prince Charles Ave, destination will be on the right.

At junction 30 - Exit toward Dagenham/Rainham/A13/W Thurrock/A126. At the roundabout, take the 3rd exit onto the A13 ramp to Tilbury/Basildon/Grays/W Thurrock/A126. Merge onto A13. Take the exit toward A128/Brentwood. At the roundabout, take the 1st exit onto Brentwood Rd/A128. Turn left at Prince Charles Ave. Destination will be on the right.



www.orsetthall.co.uk